

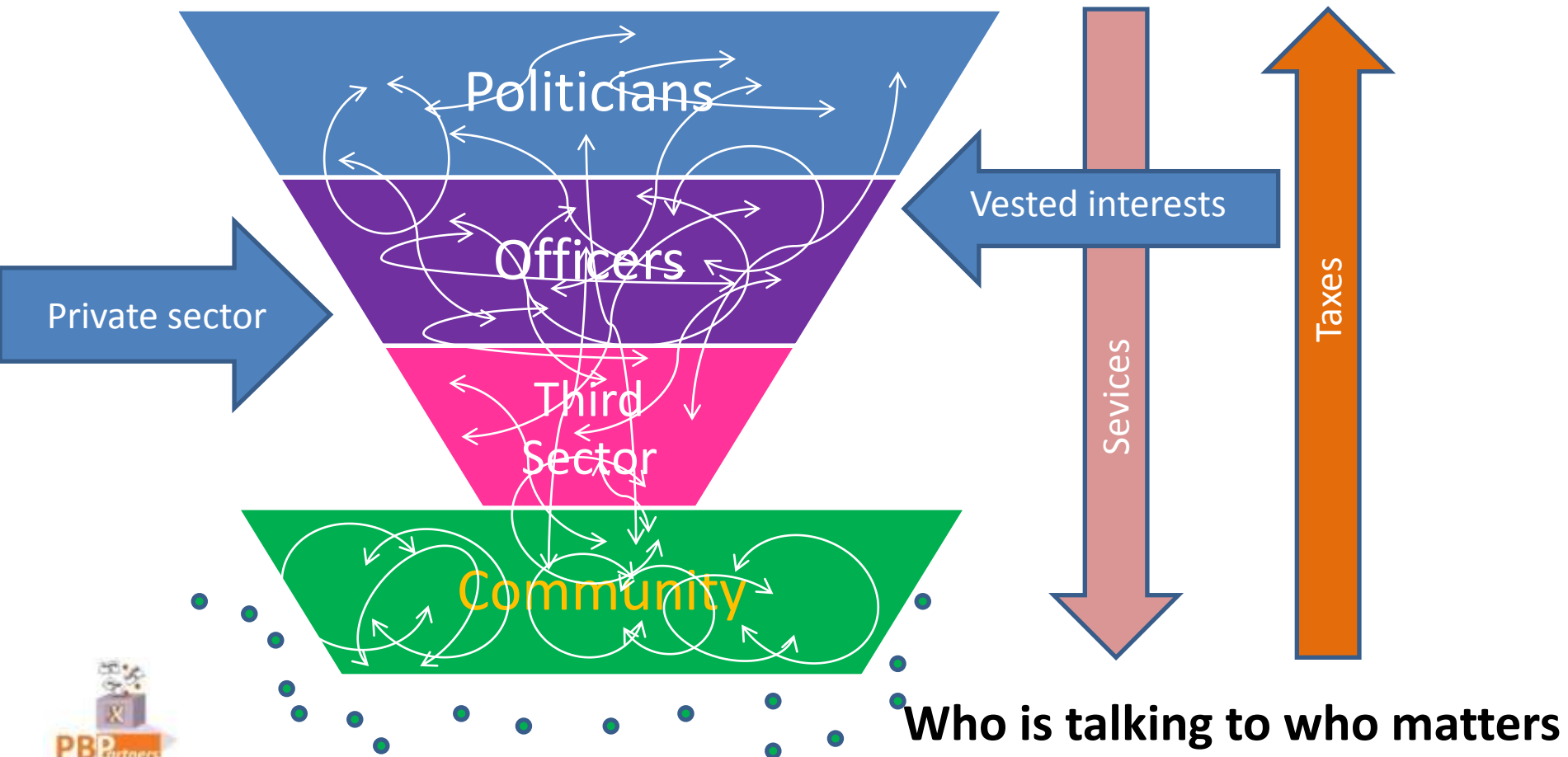


Council vs. community leadership? What about working in partnership?

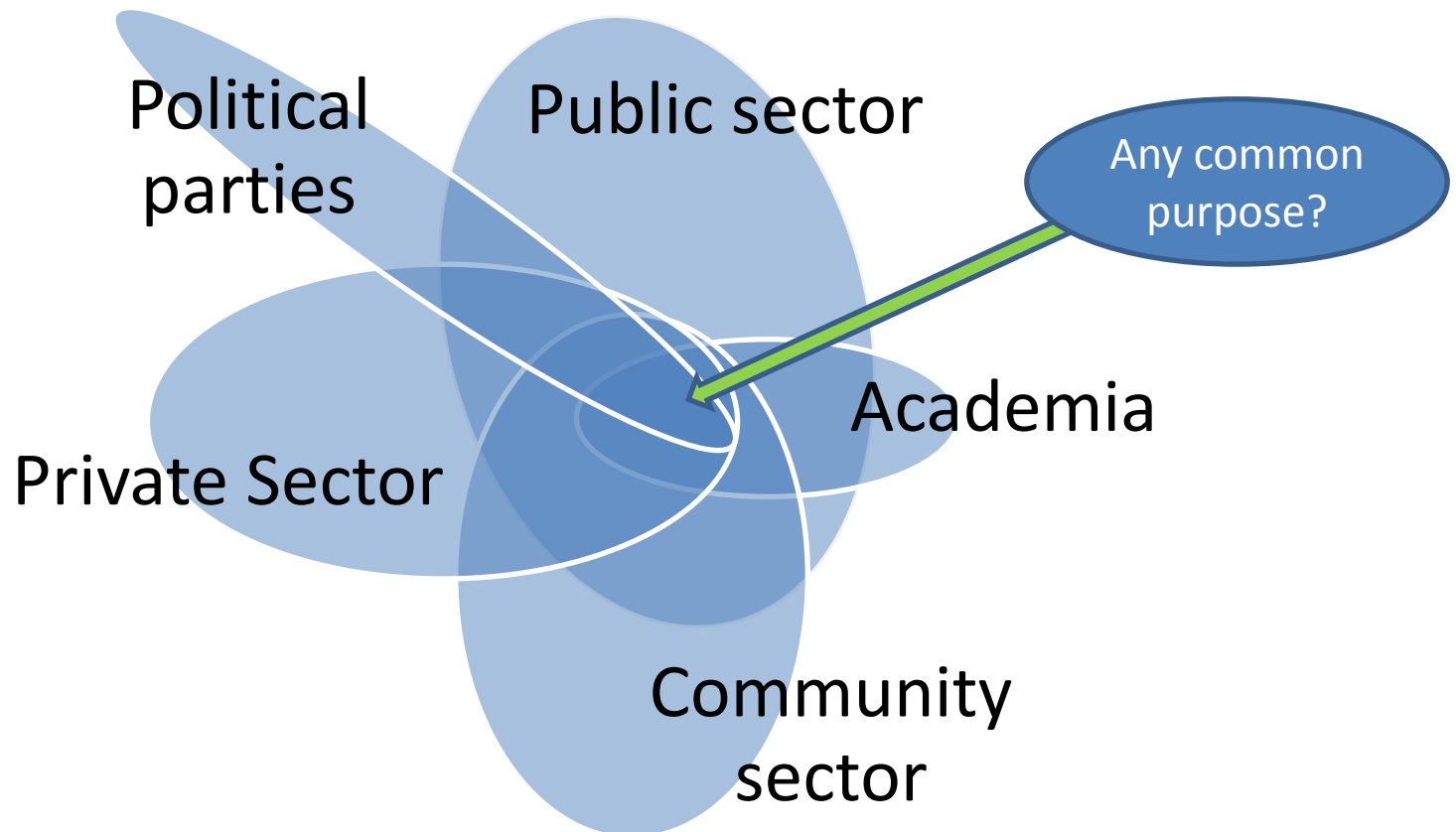
Jez Hall, PB Partners
27th Jan, London



Top Down Power in a mess?

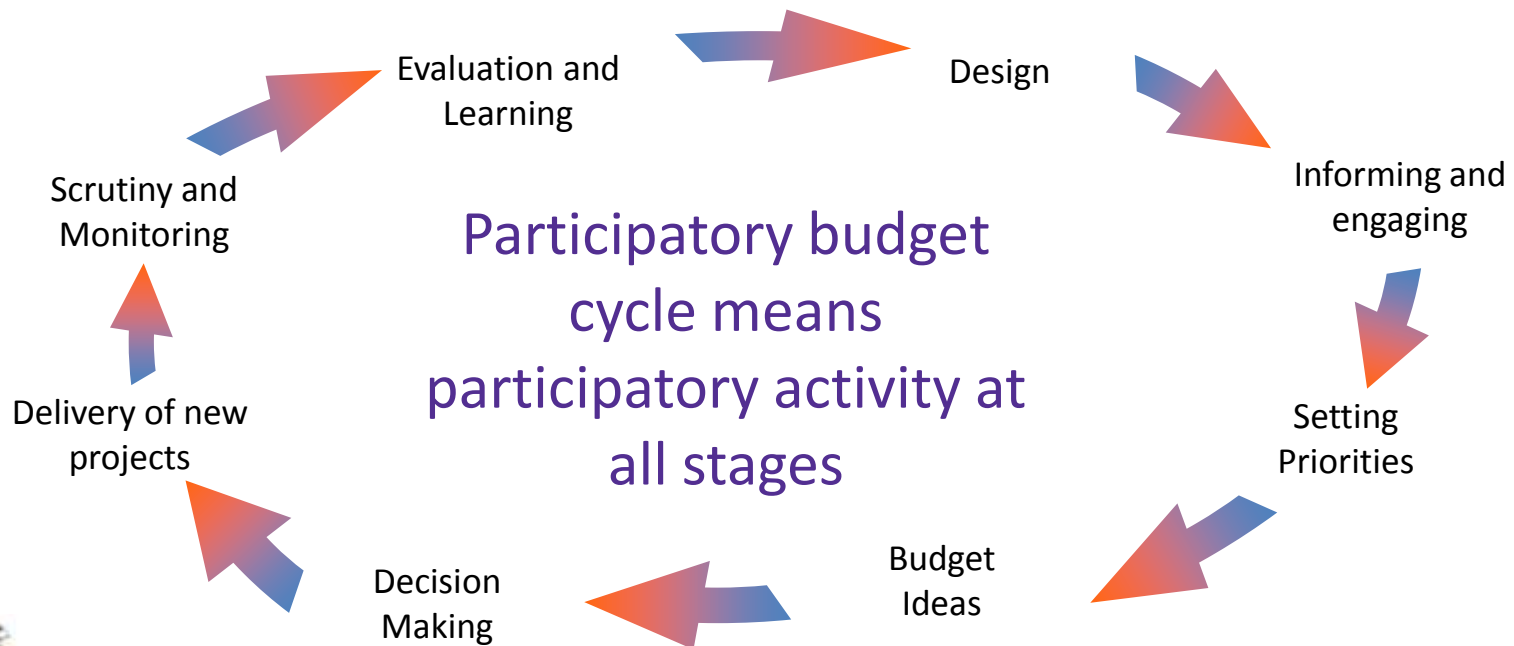


Spheres of influence and interest



Making some kind of order? No. 1

A Process (the repeating budget cycle)



Making some kind of order? No. 2

Transparency over decision making

	Crime and CS	Social care	Children and families	Transp	Leisure	Youth	MEAs
Highton	5	4	3	2	0	0	0
Easton	0	0	0	5	2	1	0
Middlewood	5	0	4	0	2	0	1
Low Hill	0	1	0	7	0	5	4
Total	10	5	7	15	4	6	5
Percentage	16.7%		11.7%		6.7%	10.0%	8.3%
Resource	£667K				£267K	£400k	£333k



Making some kind of order? No. 3

A Contract 'with' the 'community'

...Offers power holders confidence in community led governance

A 'living' vision all can adopt, and owned within the community

Established operating rules around redress, roles and responsibilities, scrutiny, leadership and process

Supported by transparent open data on actual spending

Real money that is well spent and well managed

Opportunities and openings for all to learn and benefit

Rooted in core **Values, Principles and Standards**:-- so everyone is clear about... the part they can play... how they can play that part... and how others will play their part...

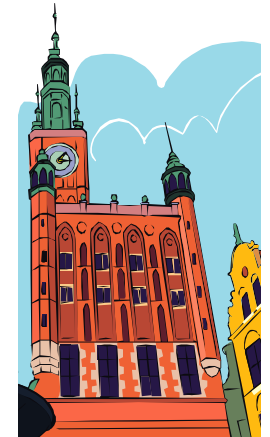
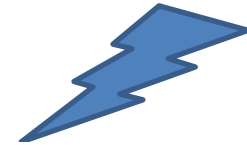


Binding or enabling?

Does power have to be taken?

Or can it become shared?

Can political will create the
right environment?



A question ... of 'legislation' or 'rights'?

